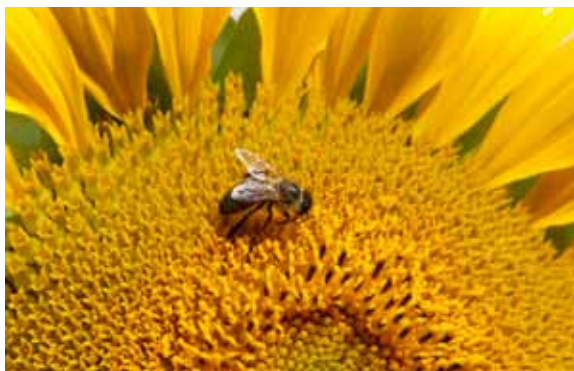


IN-USE INVESTIGATIONS

GREATER DEPTH FOR GREATER CERTAINTY



In-Use Investigation Services from Thomson CompuMark provide the in-depth intelligence you need to assess potential infringement, to mitigate risk and to plan an effective trademark strategy.

EXPERT INVESTIGATORS

When conducting In-Use Investigations, expertise makes the difference. That's why we partner with Marksmen®, a global leader in the field with a unique combination of knowledge, techniques and experience. In addition, Marksmen shares our standards and values, focusing on the needs of our customers and delivering high-quality information quickly and reliably.

BEYOND PUBLIC RECORDS

Key to the value of our In-Use Investigations is the broad range of information sources used. In addition to traditional sources, investigators conduct in-depth research using the Internet, industry-specific sources, and telephone interviews of company representatives to uncover information including:

- Company profile
- Description of goods/services
- Avenues of trade
- Current and first use of the mark
- Use of the mark on the Internet
- Abandonment
- Geographic scope
- Channels of distribution

Information is corroborated with at least two sources, whenever possible. Investigators provide a comprehensive In-Use Report detailing and analyzing their findings.

GLOBAL COVERAGE

In addition to the U.S. and Canada, we provide In-Use Investigation coverage for the following regions:

- Western Europe
- Eastern Europe
- Latin America & Caribbean
- Middle East & Africa
- Asia/Pacific, including China and Hong Kong

Investigating trademark use takes highly specialized expertise. Let us dig deeper with In-Use Investigation Services that help you effectively manage your trademark risk.

LEARN MORE

To learn more about In-Use Investigations, please call us at (800) 692-8833.

500 Victory Road
North Quincy, MA 02171-3145
Phone (800) 692-8833

thomsonreuters.com
compumark.thomson.com

THOMSON COMPUMARK
You can't be more certain.®



THOMSON REUTERS